

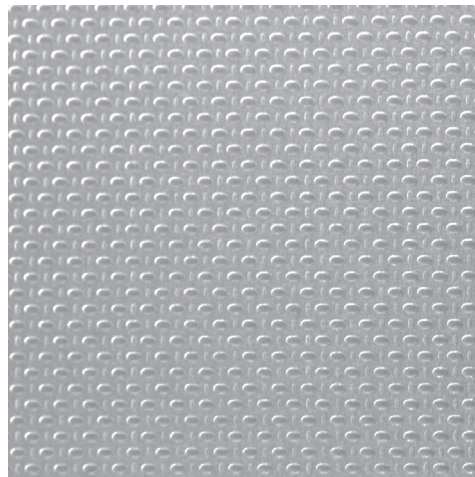
STAINLESS STEEL DATA SHEET



'THE SOURCE' FOR SPECIALTY METAL FINISHES

PRODUCT DESCRIPTION:

Linen is an embossed finish stainless steel that is uniformly textured. It resembles woven linen and is suitable for architectural applications. Stringent process controls during manufacturing, assures the highest level of visual consistency. Linen can be used for wall panels, coping, and trim.



SELECTING THE GRADE

For the best results over time, selection of the proper grade of Linen is important. Type 304, for most environments, is sufficient to prevent corrosion. Type 316 should be used near the seacoast. Low carbon versions of these grades (304L / 316L) should be used when parts are to be welded. See Table I for highlights of chemical analyses and properties. For extreme locations, e.g. near chemical plants or where steel may come into contact with salt water spray, different alloys will be required, subject to application review.

POUNDS PER PIECE

Thickness (in.) x Width (in.) x Length (in.) x .292

AVAILABLE SIZES

See Table II. Coil widths. Inquire for length.

FIRE RESISTANCE

Should a fire occur, Linen provides additional protection as stainless steel has a melting point of 2750° F.

FLATNESS

Linen is supplied to the standard commercial allowances of ASTM (American Society for the Testing of Materials).

FABRICATION

Linen can be welded or soldered. Preferably, use a grade of welding wire more noble than the work piece. Through use of shield gasses, formation of a heat tint scale may be avoided in lighter gauges. When scale does form, care must be taken to

remove it through mechanical or chemical means. Because Linen is directional, it is necessary to orient panels in relation to the rolling direction. After soldering, flux residue must be thoroughly removed.

INSTALLATION

Linen comes with a protective PVC covering that is high grade UV resistant and is designed to withstand the elements for several weeks. Yet it is recommended that this PVC covering be removed immediately after installation to prevent adhesive residue from adhering to the stainless steel finish. Linen's appearance is very uniform, but any metal surface, including a painted one, is sensitive to misalignment of panels on differing planes. Please take extra care to install within reasonable tolerances to ensure full benefit of Linen's unvarying appearance. After installation, remove any rust stains from tools/construction debris.

MAINTENANCE

Linen is designed to be essentially maintenance free. It will last for decades without requiring attention. Yet it may be appropriate at times to clean the surface in order to maintain its original appearance. Specific stainless steel agents are widely available. For general cleaning, any detergent or ammonia solution is effective. For stains, a sodium carbonate paste with a warm water rinse can be applied. For severe stains, you may use tri-sodium phosphate and caustic soda solutions. More difficult contaminants, like adhesive residue, will come off with pure acetone. Always avoid products containing chloride. Regularly clean out areas where occasional debris may collect, such as gutters.

STAINLESS STEEL DATA SHEET

Table I		304/304L	316/316L
CHEMICAL ANALYSIS			
Nickel		8%	10%
Chromium		18%	16%
Molybdenum			2%
TYPICAL MECHANICAL PROPERTIES			
Yield Strength (psi)		50,000	50,000
Tensile Strength (psi)		96,000	92,000
Elongation in 2 inches		50%	48%
Hardness (Rockwell B)		85	84
PHYSICAL PROPERTIES			
Density (lb./cu. in.)		0.292	0.292
Modulus of Elasticity in Tension (X 10 ⁶ lb./sq.in.)		28.0	28.0
Mean Coefficient of Thermal Expansion per °F (x 10 ⁻⁶)	32 - 212°F	9.6	8.9
	32 - 600°F	9.9	9.0
	32 - 1000°F	10.2	9.7
Melting Point Range °F		2550 - 2650	2500 - 2550

Table II	Size Range (inches)			
	WIDTH			
THICKNESS	.75 - 18	>18 <24	24 - 36	>36 - 72
.024 - .135	•	•	•	•

LIMITED WARRANTY

Mirror Metals (MM) warrants its ASTM Grades 304, 304L, 316, 316L products against corrosion for a period of thirty (30) years from the date of purchase, subject to the limitations described in this warranty and provided the material is utilized solely for architectural applications and in normal atmospheric conditions. For purposes of this warranty, corrosion is defined as through wall penetration of the stainless steel. No warranty is made regarding mechanical damage, physical damage, or damage as a result of substandard workmanship after receipt of the product from MM (including but not limited to welding, shaping, or forming using methods that are not best practices for stainless steel of the grade in question) or using inappropriate cleaning solutions. This warranty does not cover any product that has been subject to misuses, neglect or accident. Use in chemical or manufacturing facilities, which produce or use chemicals known to have a deleterious effect on stainless steel, is excluded from this warranty. Please contact MM prior to purchase if there is any question regarding application.

THE EXPRESS WARRANTY GIVEN ABOVE IS IN LIEU OF AND EXCLUDES ALL OTHER WARRANTIES, WHETHER EXPRESSED OR IMPLIED, INCLUDING ANY WARRANTY OF MERCHANTABILITY, WARRANTY OF FITNESS FOR PARTICULAR PURPOSE OR WARRANTY THAT THE WHOLE OF THE GOODS CONFORM TO ANY SAMPLE OR MODEL. WITHOUT IN ANY WAY LIMITING THE GENERALITY OF THE FOREGOING, IN NO EVENT SHALL MM BE LIABLE FOR ANY CONSEQUENTIAL OR INCIDENTAL DAMAGES, LIABILITIES OR EXPENSES (INCLUDING, WITHOUT LIMITATION, ANY LOSS OF PRODUCTION OR ANTICIPATED PROFITS), DIRECTLY OR INDIRECTLY INCURRED BY BUYER WITH RESPECT TO THE MATERIAL FURNISHED OR AGREED TO BE FURNISHED BY MM. THE EXCLUSIVE REMEDY AGAINST MM WITH REGARD TO ANY CLAIM ARISING OUT OF THE ORDER IS, AT MM'S OPTION, REPLACEMENT OF SUCH GOODS OR CANCELLATION OF THE ORDER AND REFUND OF THE PURCHASE PRICE. IN NO EVENT, REGARDLESS OF THE LEGAL THEORY ON WHICH A REMEDY IS SOUGHT, SHALL MM'S LIABILITY EXCEED THE PURCHASE PRICE OF THE MATERIAL IN QUESTION. NO ACTION, REGARDLESS OF FORM, ARISING OUT OF THIS SALE MAY BE BROUGHT BY EITHER PARTY MORE THAN TWO (2) YEARS AFTER THE CAUSE OF ACTION HAS OCCURRED.

Mirror Metals • 350 Hearst Drive • Oxnard, California 93030

Phone: (805) 981-2177 • FAX (805) 981-2178 • Email: Sales@MirrorMetals.com • www.MirrorMetals.com